

# STEREOLITHOGRAPHY 3D PRINTER SLA600



**PROTOFAB**<sup>™</sup>  
BEYOND DIMENSIONS

**ALLROUNDER**

[www.3dprotofab.com](http://www.3dprotofab.com)

## **| INDUSTRIAL GRADE BUILDING CAPACITY**

Our international best-seller has a maximum build size of 600 x 600 x 400 mm. The SLA600 can satisfy most industrial design and prototyping needs with the lowest per unit cost.

## **| TOP QUALITY COMPONENTS**

Inside the solid steel frame sits a highly stable granite reinforced printing platform with an aerospace-grade aluminum Z-axis module, to minimize vibration and maximize precision.

## **| TRUE TO CAD ACCURACY AND SURFACE FINISH**

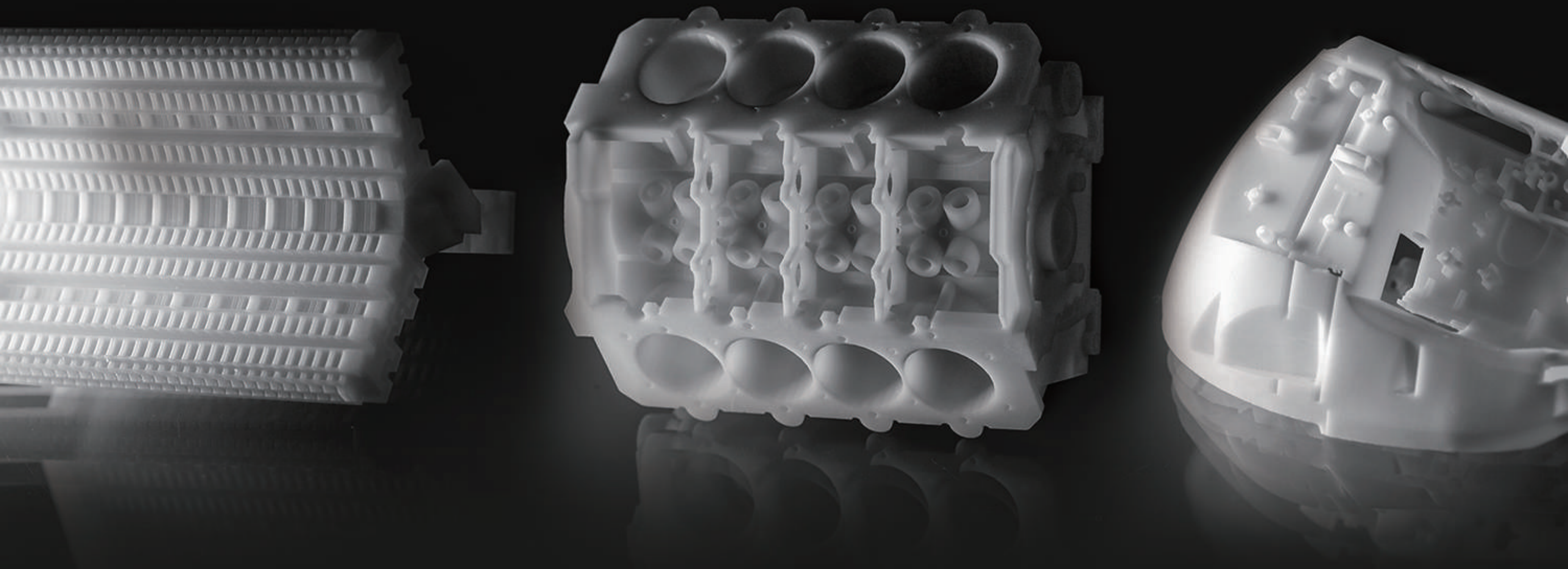
Equipped with fast and intuitive printer interface software and a galvanometer optical system by ScanLab Germany, the SLA600 displays top scanning speeds and enhances production efficiency significantly. Surface roughness as low as 0.05  $\mu\text{m}$  makes post-processing simple and efficient.

## **| WIDE CHOICE OF MATERIALS**

A selection of over 10 different custom-designed printing materials with unique characteristics for functional prototypes and low-volume manufacturing.

## **| MADE TO MEASURE CUSTOMIZATION**

We offer a considerable selection of customizations free of charge. Available upgrades include autofocus, automatic material refilling, environment sensors, as well as remote diagnostics and control, ensuring you are industry 4.0 ready.



# SLA600 TECHNICAL DATA SHEET

Build Size (xyz) <sup>1</sup>	600 x 600 x 400 mm (23.62 x 23.62 x 15.75 in)	
Printing Speed	50 - 100 g/h	
Scanning Speed	6.0 m/s (Recommended) 10.0 m/s (Maximum)	
Accuracy	Part Size < 100 mm (3.9 in): ±0.1 mm (±0.004 in)	Part Size ≥ 100 mm(3.9 in): ±0.1% x L
Layer Thickness	0.05 mm (0.002 in) – 0.25mm (0.039 in)	
Laser Type	Diode-pumped solid-state laser Nd:YVO <sub>4</sub>	
Optical System	SCANLAB Galvanometer Scanner Beam Size: 0.12 – 0.2 mm	
Operating Software	Sirius Intelligent Printing Control Software Linux / Windows (Optional)	
CAD Interface	STL Format Files	
Machine Size W x D x H	1630 x 1240 x 1920 mm (64.17 x 48.82 x 75.59 in)	
Ambient Temperature	21 - 25°C (70 - 77°F)	
Relative Humidity	Less than 40%	
Power Requirements	200 - 240 VAC 50 / 60 Hz Single Phase 6A	



Accuracy may vary depending on build parameters, part geometry and size, part orientation and post-processing methods.

By choosing a ProtoFab SLA machine, you also gain access to comprehensive training for 3D printing, post-processing and advanced industrial design assistance. We also provide you with free lifetime technical support to help your business optimize production and maximize profitability.



899 Maqing Road, Haicang District, Xiamen, Fujian, China 361026 P : +86-592-3862946 F : +86-592-3862808 E : info@3dprotofab.com

Powered by Vistar (Xiamen) Industries CO., Ltd.

